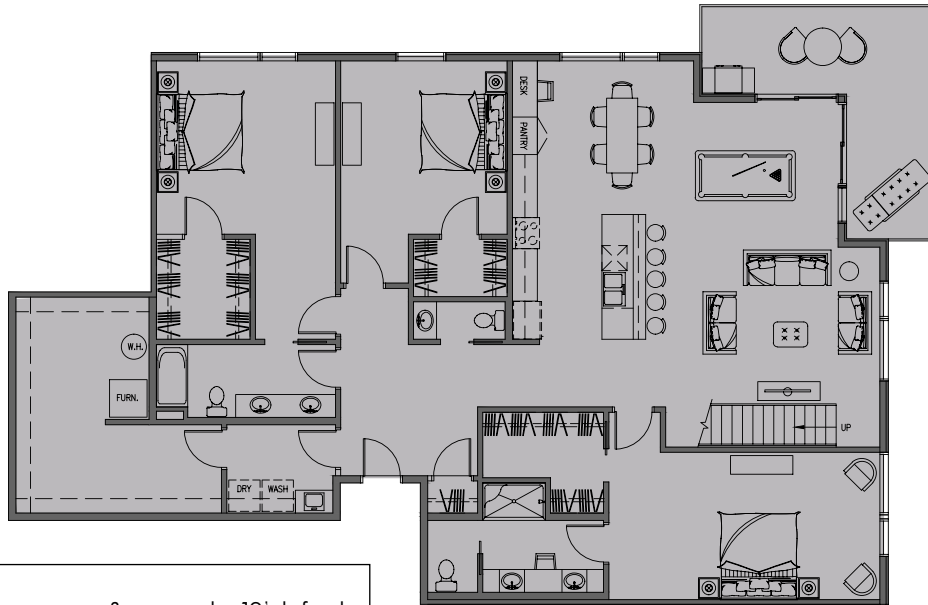




CITY CENTRE
LOFTS

THE EMERALD PENTHOUSE VUE



B4 MAIN

Penthouse living at its finest with 18' lofted ceilings and access to your own private roof top deck.

In addition, this unit features an open floor plan with views to the north and east with a partially covered wrap-around deck on the main floor.

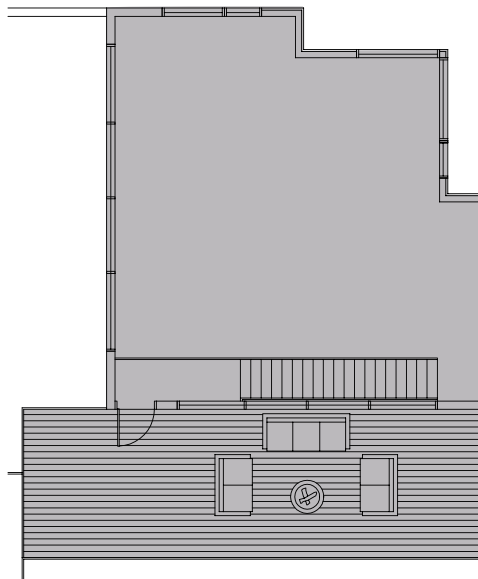
The well designed kitchen is highlighted by a center island, pantry, and bar area that is adjacent to the spacious dining and family rooms.

The master bedroom suite with views to the east includes a walk-in closet and a private bath with dual-sink vanity and tiled shower.

The guest bedroom suite includes a walk-in closet with full bathroom and dual-sink vanity. The third bedroom offers a walk-in closet of its own.

Conveniently located laundry room and double sized storage area within the unit.

- 10' ceilings
- 3 bedrooms, 2 1/2 baths



B4 ROOF DECK

RIVER VIEW

