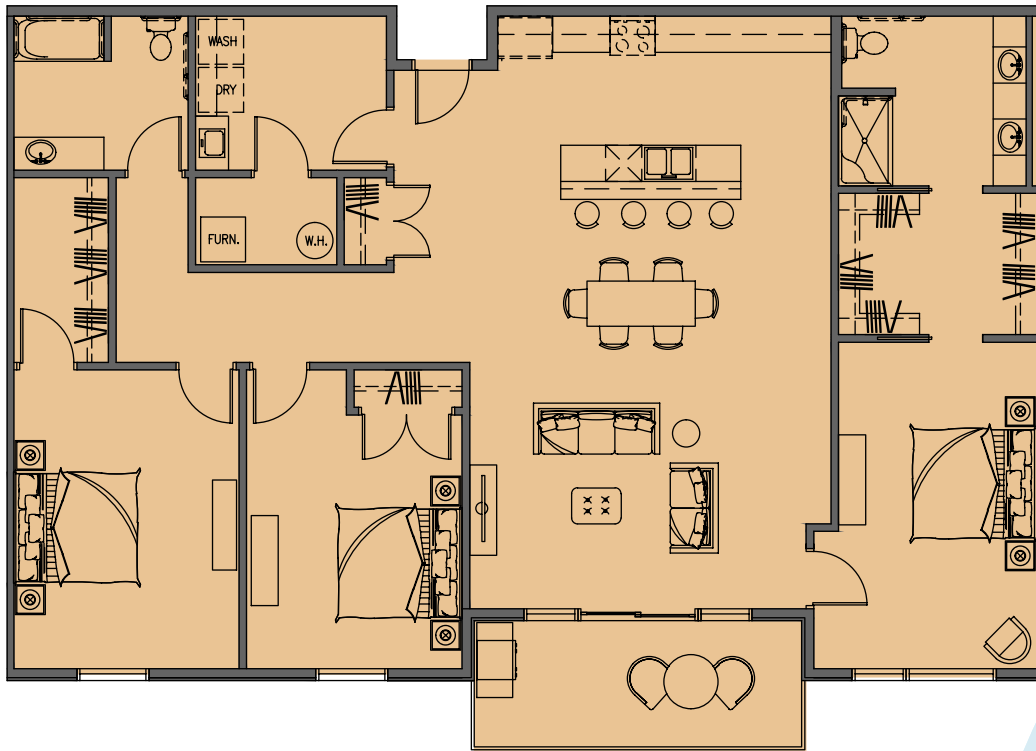




CITY CENTRE  
L O F T S

## THE PEARL GRAND VUE



E3

This unit features an open floor plan with a large south facing partially covered deck.

The well designed kitchen is highlighted by a center island, pantry, and bar area that is adjacent to the spacious dining and family rooms.

The master bedroom suite with views to the south includes a walk-in closet and a private bath with dual-sink vanity and tiled shower.

The guest bedroom suite includes a walk-in closet with full bathroom and dual-sink vanity.

The third bedroom offers a great view to the south of its own.

Conveniently located laundry room.

- 10' ceilings
- 3 bedrooms, 2 baths

RIVER VIEW



404 4th Avenue North, Suite 201 | Fargo, ND 58102 | Contact Mike Kelly at Phone: 701.371.2741 | Email: Mikek@TeamFMI.com

WWW.CITYCENTRELOFTS.COM