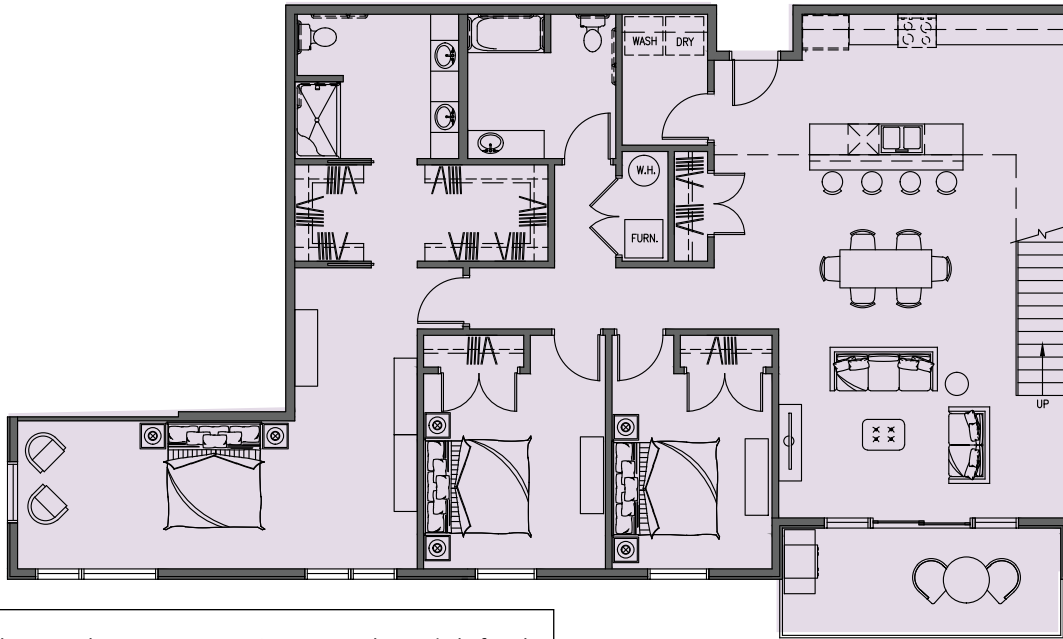




CITY CENTRE
LOFTS

THE OPAL PENTHOUSE VUE



F4 MAIN

Penthouse living at its finest with 18' lofted ceilings and access to your own private roof top deck.

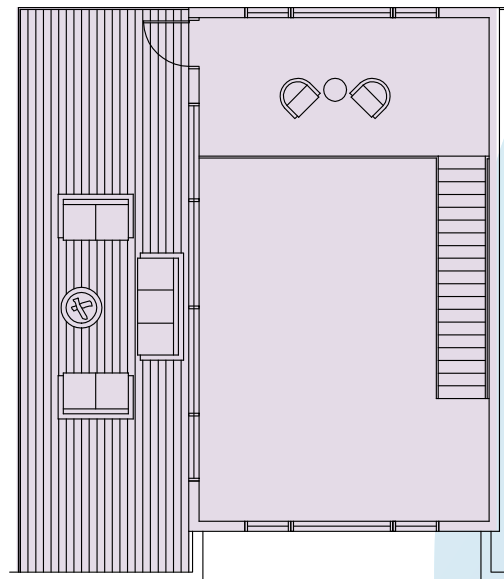
In addition, this unit features an open floor plan with a large south facing partially covered deck on the main floor.

The well designed kitchen is highlighted by a center island, pantry, and bar area that is adjacent to the spacious dining and family rooms.

The master bedroom suite with views to the south and west includes a walk-in closet and a private bath with dual-sink vanity and tiled shower.

This home also boasts two additional bedrooms with a full bathroom and a separate laundry room.

- 10' ceilings
- 3 bedrooms, 2 baths



F4 ROOF DECK

RIVER VIEW

