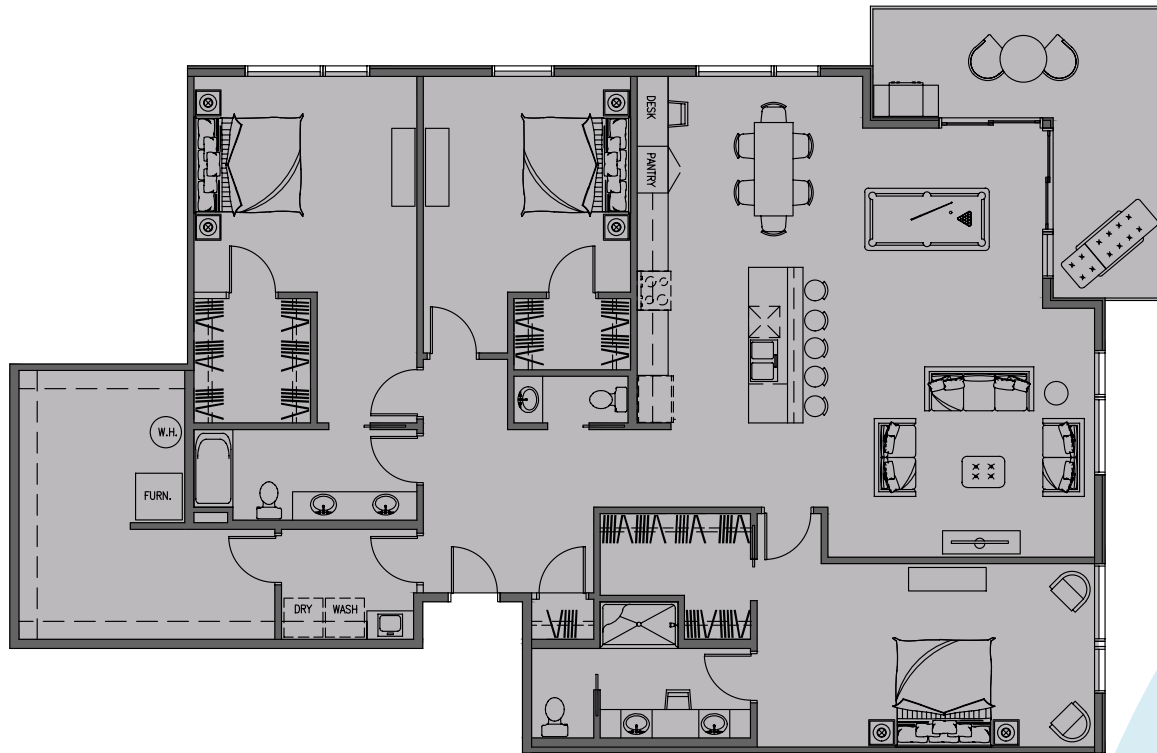




CITY CENTRE  
LOFTS

## THE EMERALD GRAND VUE



B3

This unit features an open floor plan with views to the north and east with a partially covered wrap-around deck.

The well designed kitchen is highlighted by a center island, pantry, and bar area that is adjacent to the spacious dining and family rooms.

The master bedroom suite with views to the east includes a walk-in closet and a private bath with dual-sink vanity and tiled shower.

The guest bedroom suite includes a walk-in closet with full bathroom and dual-sink vanity.

The third bedroom offers a walk-in closet of its own.

Conveniently located laundry room and double sized storage area within the unit.

- 10' ceilings
- 3 bedrooms, 2 1/2 baths

RIVER VIEW

